

ELKHART COUNTY SHERIFF'S DEPARTMENT

Bradley D. Rogers, Sheriff

Quarterly Crime Report

A summary of crime in Elkhart County

Third Quarter 2011



In this Issue...

Crime Statistics
Selected Crimes by Section

Elkhart County Sheriff's Department
26861 County Road 26, Elkhart, Indiana 46517
(574)891-2300

**Elkhart County Sheriff's Department Crime Report
Third Quarter 2011**

Crime Statistics

Part I Crimes are seven categories used as a basis for the county crime rate, a product of crime numbers and population. Part II Crimes are the remaining categories and generally considered less serious. When comparing the selected crimes, keep in mind that some most often come to the attention of law enforcement through public reports, while others are mainly due to police initiated activities. While we do not like to see reported crime go up, it is not necessarily bad that self-initiated crimes increase, since this shows law enforcement are working proactively.

The table below shows Part I and selected Part II Crimes for the third quarter in 2011 and for the period including the second quarter in 2011. A comparison is also made annually in 2009 and 2010.

PART I CRIMES	Quarters		Change		Annually		Change	
	3rd	2nd	-/+	%	2010	2009	-/+	%
	2011	2011						
Murder	1	0	+1	1%	2	0	+2	1%
Rape	14	4	+10	71%	16	30	-14	88%
Robbery	8	5	+3	38%	18	23	-5	28%
Battery	160	88	+72	45%	386	181	+205	13%
Burglary	215	106	+109	51%	528	520	+8	2%
Theft	432	195	+237	55%	990	1081	-91	9%
Vehicle Theft	89	54	+35	39%	142	68	+74	9%
TOTAL	919	452	+467	51%	1940	1903	+37	2%
PART II CRIMES	Quarter		Change		Annually		Change	
	2nd	1st	-/+	%	2010	2009	-/+	%
	2011	2011						
Criminal Mischief	209	130	+79	38%	499	509	-10	2%
ID Theft	30	16	+14	47%	54	94	-40	74%
Domestic Battery	130	63	+67	52%	276	263	+13	5%
Arson	3	2	+1	33%	13	3	+10	33%
Juvenile Offense	315	185	+130	41%	778	481	+297	62%
Kidnapping	0	0	0	*	1	2	-1	2%
Drug Violations/Possession	155	97	+58	38%	299	312	-13	1%
Drug Violations Sale	33	16	+17	52%	79	70	+9	13%
TOTAL	875	509	+366	42%	1999	1756	+243	14%
GRAND TOTAL	1794	961	+833	46%	3939	3659	+280	8%

* Percentage cannot be calculated.

Elkhart County Sheriff's Department Crime Report Third Quarter 2011

Selected Crimes by Section

Elkhart County is divided into 25 reporting crime sections. For those who are interested in crime levels in a particular area, it is helpful to examine by section. This matrix shows the number of selected crimes per section for the third quarter of 2011. Reporting crime sections are not of equal size, thus the area covered should be considered when comparing activity.

Location by township and incorporated areas

	Murder	Rape	Robbery	Battery	Burglary	Theft	Vehicle Theft	Mischief	I.D. Theft	Arson	Domestic Battery	Juv. Crimes	Kidnapping	Drug Poss.	Drug Sale	Total
Cleveland	1	3	2	18	24	75	15	21	2		26	37		22	3	249
Osolo		1	1	36	49	74	13	58	8	2	20	38		33	7	340
Washington		2		7	9	17	5	13			12	16		9	1	91
York				9	4	17	5	9	2		9	13		13	1	82
Baugo		1	1	13	25	65	19	22	4		8	45		11	3	217
Concord		5	3	39	53	95	11	37	6	1	32	81		28	4	395
Jefferson				7	15	32	4	9	2		8	25		13	2	117
Middlebury				1	3	5	1	8			1	4		2	1	26
Olive					1			2			1	1		1		6
Harrison				12	5	3	2	4	1			7		1	2	37
Elkhart				6	17	25	6	6	4		4	14		4		86
Clinton				1	2	6	1	6				7			1	24
Lock				1							1	2		2	1	7
Union						1					1			1	1	4
Jackson				5	4	5	6	8			2	2		4	2	38
Benton				2	3	8	1	5			3	7			2	31
Elkhart City		1		2								10		6	2	22
*Bristol											1					1
*Middlebury														1		1
*Wakarusa																0
Goshen City						3			1			2		4		10
*Millersburg		1	1		1	1						1				5
*Nappanee																0
Outside				1							1	3				5
TOTAL	1	14	8	160	215	432	89	209	30	3	130	315	0	155	33	1794

Elkhart County Sheriff's Department Crime Report Third Quarter 2011

The purpose of the crime analysis is to assist operational and administrative personnel with planning and deployment of resources in order to prevent, reduce, and suppress criminal activities.

This crime analysis is useful in the department's long-range planning efforts, providing estimates of future crime trends and assisting in the identification of enforcement priorities. Analysis aids in the investigative process to increase apprehension and case clearance.

The township matrix reveals most crime activity occurs in Concord, Osolo, Cleveland, and Baugo townships, making up 67% of the targeted crimes, compared to last quarter's 62%. Comparing this quarter to last quarter, the northwest section of the county (Cleveland, Osolo, and Baugo), crime rate increased by 49%. In the central section (Concord and Jefferson), there was an increase of 51%. In the northeast section (Middlebury, Washington, and York) the crime rate is up by 51%. In the south section (Olive, Harrison, Elkhart, Clinton, Lock, Union, Jackson, and Benton), there was an increase of 64%. The patrol division continues to be most visible in townships with higher crime. There is no reason to change this methodology going into the next quarter. In the last quarter, Sheriff Rogers established a second patrol zone in our southern townships in order to provide additional police coverage. Even though criminal activity increased in this area, but are response time to service calls decreased. Target crimes have increased 46%, which is typical for this quarter. Once again, Concord Township has the highest crime with Osolo Township a close second. Since the sheriff's department relocated into Concord Township in the second quarter of 2010, the crime rate in Concord Township dropped significantly and crime started moving into Osolo, Baugo, and Cleveland Townships. Comparing the third quarter of last year to this year's total, the crime rate increased by 53% in Concord Township, this was expected for this time of year.

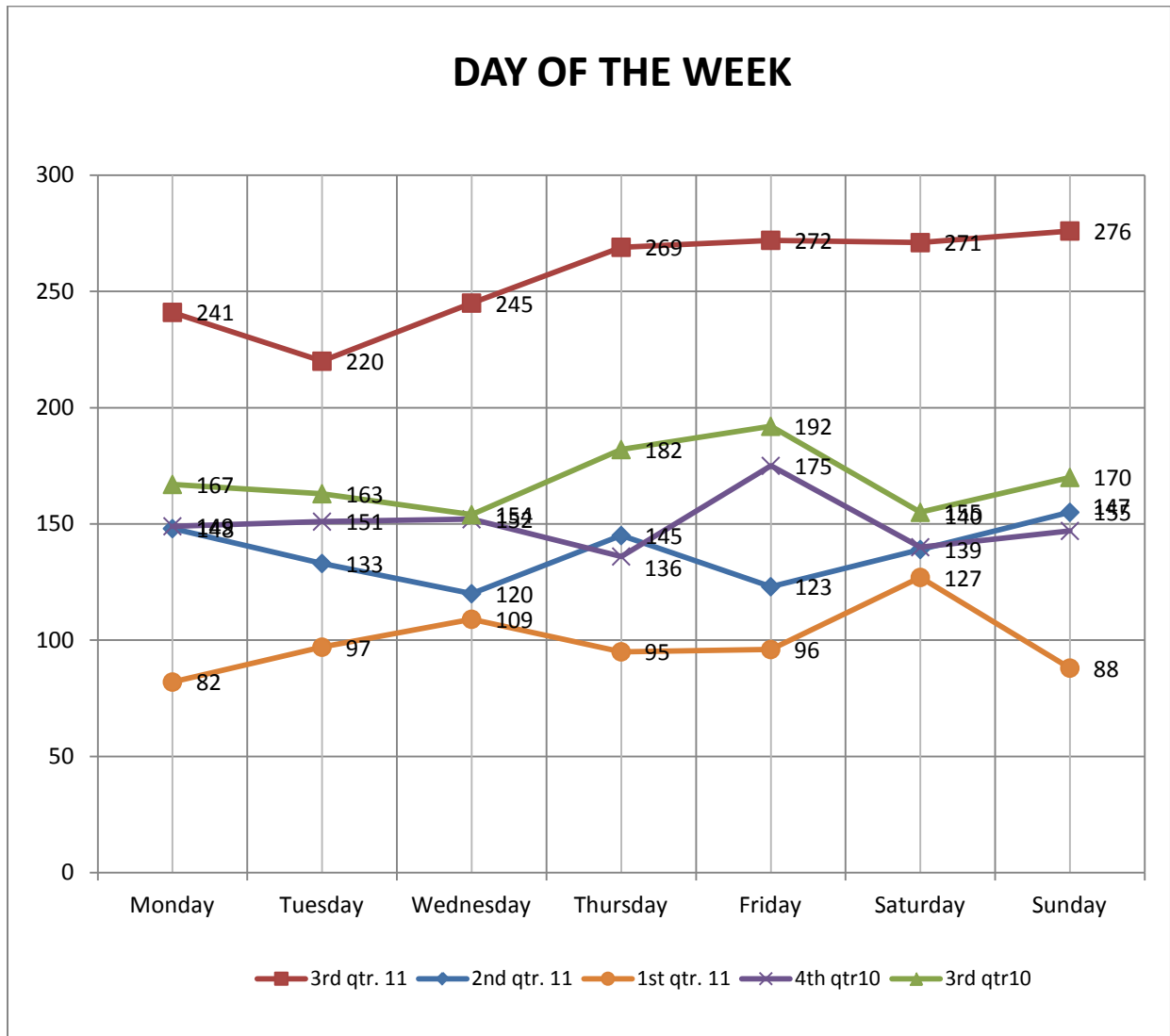
Day of Week

<i>Crime Type</i>	<i>Sunday</i>	<i>Monday</i>	<i>Tuesday</i>	<i>Wednesday</i>	<i>Thursday</i>	<i>Friday</i>	<i>Saturday</i>
Murder		1					
Rape		2	3	2	3	3	1
Robbery	4	2		1		1	
Battery	27	21	21	15	25	26	26
Burglary	30	30	18	27	42	44	24
Theft	54	51	62	72	63	68	61
Vehicle Theft	13	14	11	10	12	10	19
Criminal Mischief	33	34	21	32	27	28	34
ID Theft	2	3	5	6	3	8	3
Domestic Battery	24	17	17	14	18	16	24
Arson	1				1		1
Juvenile Crimes	53	50	41	41	40	43	47
Kidnapping							
Drug Possession	32	13	20	20	27	20	23
Drug Sale	3	3	1	5	8	5	8
TOTAL	276	241	220	245	269	272	271

The crime report has a systematic structured process for dissecting targeted events into its basic parts in identifying important essential elements. Our analysis reveal patterns or trends that could be predictive or could indicate program effectiveness, training needs, equipment upgrade and/or policy improvements.

**Elkhart County Sheriff's Department Crime Report
Third Quarter 2011**

The "Day of the Week" chart continues to target reported crimes for comparison. With the current economy and seasonal climate, there is a 46% increase in targeted crimes, which is typical during the summer months and schools are not in sessions during June, July, and most of August. Deputies will continue to participate in selective enforcement, attend Neighborhood Watch meetings as well as citizens taking a proactive approach at monitoring and reporting suspicious activity in their respective neighborhoods. The chart indicates most crimes are reported on Sunday, Friday, and Saturday. During these three days, there are between 23 and 26 deputies working at any given time. The lowest number of reported crimes occurred on Tuesday as compared to Tuesday in the last quarter. Historically, most crimes occur over the weekend and reported on Monday. Since our economy has changed, people are home more and there is an increase in children being home school with crimes being reported sooner with a better accuracy when crimes are occurring.



**Elkhart County Sheriff's Department Crime Report
Third Quarter 2011**

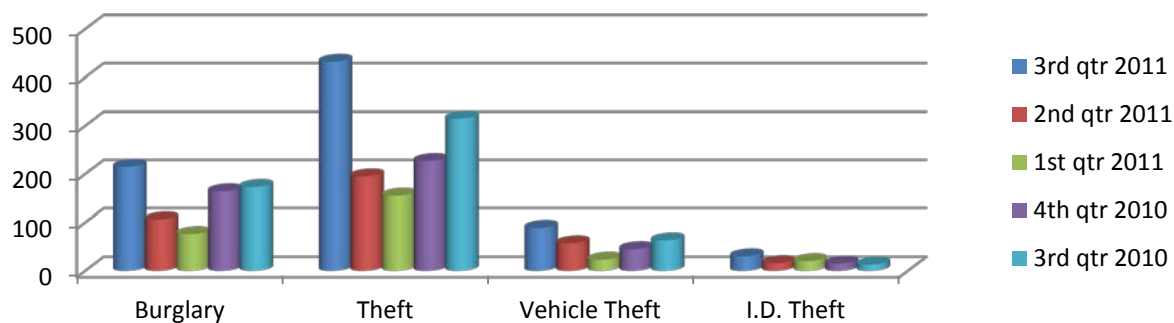
During this quarter, most of the targeted crimes are reported between 9:00am and 6:00pm., as compared to the same period in the last quarter. As reported in the last quarter, the economy showed very little improvement. However, there remains a large population of unemployed citizens who are staying home, collecting unemployment, resulting in deputies on the first and second shifts taking the bulk of reports during this quarter. Since the unemployed are staying home, crimes are being reported earlier, providing us with a realistic time when crimes are occurring. The increase in crime is due to the warmer weather, students out of school, family vacations, and season activity. We will continue with the number of deputies working between these peak hours. Currently we have 24 deputies working these two shifts, leaving 12 deputies for the midnight shift.

Time of Day

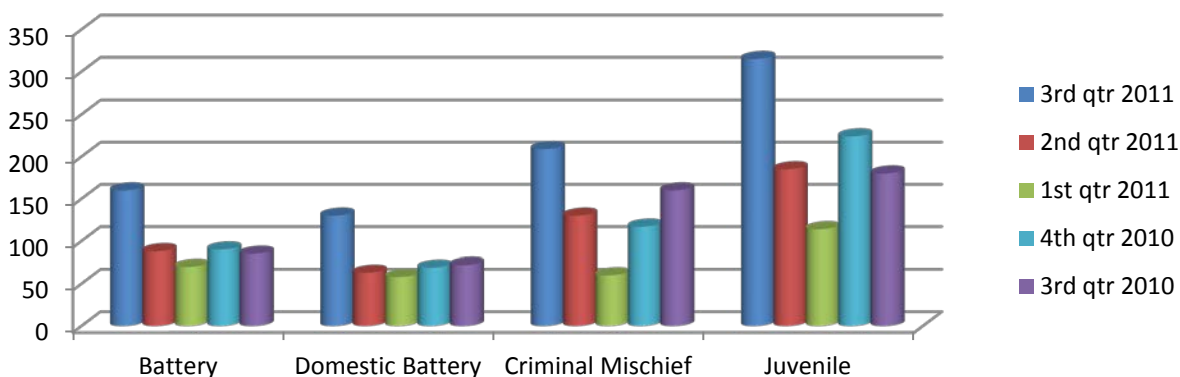
TIME	Murder	Rape	Robbery	Battery	Domestic Battery	Burglary	Theft	Vehicle Theft	ID Theft	Arson	Criminal Mischief	Juvenile	Drug Poss	Drug Sale	SUM
*0100		1	1	2	3	5	5	4			6	24	6	1	58
*0200			1	6	7	4	6	2		1	3	18	8		56
*0300				3	3	2	2	3			3	3	4		23
*0400				3		3	3	5			4	7	6		31
*0500				2	1	1	4				2	2			12
*0600		1		1	2	4	4	4			6	2	2		26
*0700		2		2	3	8	10	4		1	13	20	5	1	69
*0800		1		6	2	12	18	6	1		10	6	3	1	66
*0900				8	2	12	24	8			17	10	2		83
1000				4	6	12	27	7			13	15	7	2	93
1100		2		11	4	14	33	3			12	12	4	2	97
1200		1		9	5	11	25	2	2		11	16	5	2	89
1300			1	10	5	12	23	6	4		11	10	5	2	89
1400		2		14	10	16	39	6	6	1	12	10	2	4	122
1500			1	10	11	27	50	5	5		18	25	5	3	160
1600				4	4	14	37	3	5		18	23	11	3	122
1700				15	7	6	32	2	1		9	20	10	3	105
1800		1		9	13	12	20	6	4		10	15	13		103
1900		1	1	4	7	5	20	4			8	9	5		64
2000		1	1	11	8	8	11	2	1		5	18	4	1	71
2100		1		8	7	12	13				5	18	11		75
2200				9	6	7	12	2	1		4	10	20	4	75
2300	1			7	8	5	5				4	3	9	3	45
2400			2	2	6	3	9	5			5	19	8	1	60
SUM	1	14	8	160	130	215	432	89	30	3	209	315	155	33	1794

**Elkhart County Sheriff's Department Crime Report
Third Quarter 2011**

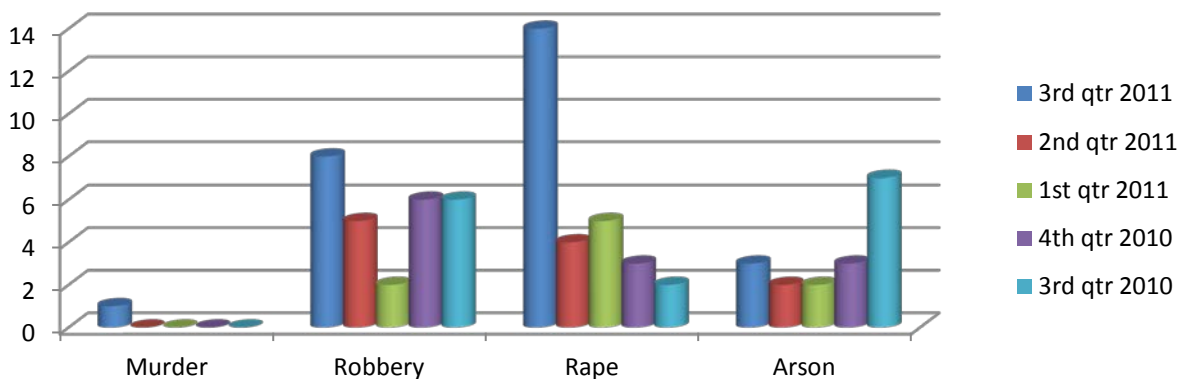
Number of Crimes



Number of Crimes



Number of Crimes



**Elkhart County Sheriff's Department Crime Report
Third Quarter 2011**

This analysis does not identify any significant issues associated with employee performance, training, and equipment. Deputies will continue to receive training and policies will continue to be reviewed and updated as needed. As stated earlier, there are a couple of reasons for the increase in crime this quarter. Crime is seasonal to our area and our struggling economy is starting to see some relief. People commit crimes to survive, support their drug habits and some do it for an adrenaline rush. The increase in gold has certainly affected our area with an increase in precious metals. The 46% increase certainly supports this theory, at least during our summer months.

While the sheriff's department struggles with its restricted budget, we will continue to be proactive in educating our citizens and finding new ways in reducing crime.